

Best of Show Awards

- Best of Show (BOS) Honey Entries 5.00 & Rosette
- Best of Show (BOS) All Other Entries 5.00 & Rosette
- Best of Show (BOS) Overall Exhibitor 5.00 & Trophy

Best of Show Rosettes will be awarded by the Judge for the best overall exhibit in the honey category (classes 1-12) and for the best overall exhibit in the All Other category (classes 13-33). The Best of Show Overall Exhibitor Trophy will be awarded to the exhibitor with the highest number of points accrued. Each exhibitor's entries will be accrued three points for each blue ribbon, two points for each red ribbon and one point for each white ribbon.

CATEGORY RULES — Noncompliance will result in disqualification

- Class 1,2,3,4,5,6: All extracted honey entries must be exhibited in a glass one-pound queenline, classic or other flat-faced honey jar, with 3 jars per entry.
- Class 7: All chunk entries to be exhibited in one-pound wide mouthed jars, with 3 jars per entry.
- Class 8,9: Frame of honey must be supported vertically in a sealed, rigid display case with transparent windows for viewing the entire comb portion. Class 9 must be for cut comb, no plastic or wired foundation.
- Class 10: 3 sections in round or square containers.
- Class 11: 3 pieces in fully clear plastic boxes.
- Class 12: Exhibited in one-pound, wide mouth, round jar.
- Class 21: Include product name, recipe and list percentage of beeswax.
- Class 22: Exhibited in one-pound honey jar.
- Class 23: Propolis must weigh at least 2 oz., be free of wax, honey and other debris and be rolled flat in a plastic bag or other clear, plastic container.
- Class 24,25,26: Exhibited in one clear, 750 ml wine bottle.
- Class 27: A single black and white or color print, 5"x7" minimum, suitably framed, matted or mounted, pertaining to beekeeping.
- Class 28: Gift packs must include one or more products of the hive, but may also include other items that enhance the appeal or promote the use of hive products. Gift packs should be suitable for personal gift use regardless of commercial applications. The gift pack should be a box, basket or other suitable container.
- Class 29: Includes drawings, paintings, pottery, needlework, batik, carvings, wax moldings, etc., depicting honeybees and beekeeping activities.
- Class 30: Must be a gadget or jig made by the exhibitor for use in beekeeping.
- Class 31: May include pictures but not include beekeepers' equipment, tools, observation hives, bakery products, canned goods or honey in tins.
- Class 32: May include products of the hive or equipment.
- Class 33: The purpose of this display is to promote the beekeeping industry by presenting its products, equipment and educational material. The display must include the name of the beekeeping organization. Display may include honey in glass or plastic containers, beeswax, other bee products, beekeepers' equipment or other educational material.

Department H-Flowers

A CENTENNIAL CELEBRATION

September 12-15, 2024

An NGC Standard Flower Show Presented by the Charles County Garden Club of Maryland, Inc.

Member of District II, Federated Garden Clubs of Maryland Inc.
Central Atlantic Region of State Garden Clubs, Inc. and National Garden Clubs, Inc.

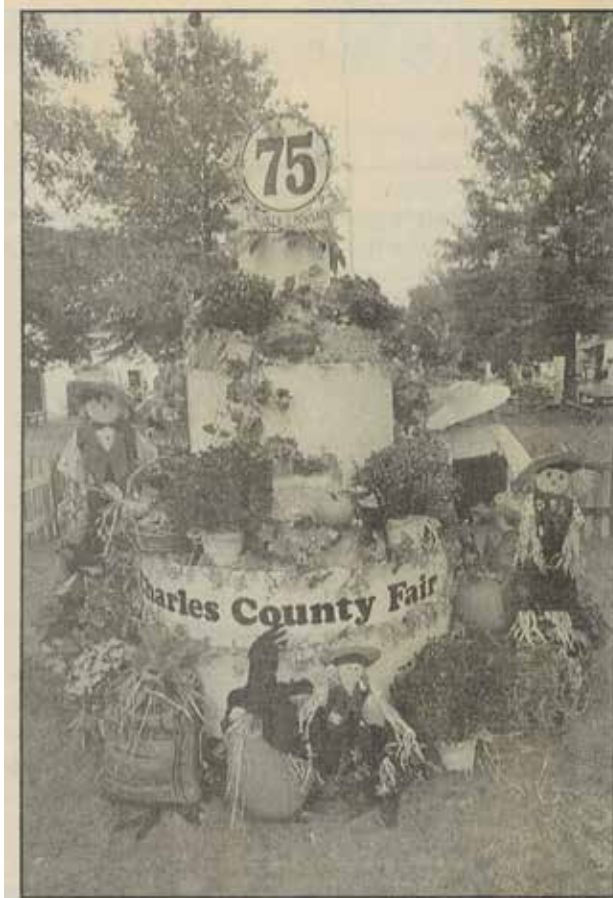
OPEN TO THE PUBLIC

Thursday, September 12th : 4:00 p.m. - 9:00 p.m.
Friday, September 13th & Saturday, September 14th : 9:00 a.m. - 9:00 p.m.
Sunday, September 15th : 10:00 a.m. - 6:00 p.m.

Charles County Fairgrounds
8440 Fairground Road • La Plata, Maryland 20646

COMMITTEE CHAIRMEN

| | | | |
|-----------------------------|-----------------------|------------------|--------------|
| CLUB PRESIDENT: | Ann Page | 240.271.7391 | |
| SHOW CHAIRMEN: | Mary Lilly | 301.752.1980 | |
| | Paula Winkler | 301.934.8305 | |
| | Mary Lilly | 301.752.1980 | |
| SCHEDULE CHAIRMEN: | Paula Winkler | 301.934.8305 | |
| | Mary Lilly | 301.752.1980 | |
| | Paula Winkler | 301.934.8305 | |
| AWARDS CHAIRMEN: | Mary Lilly | 301.752.1980 | |
| | Paula Winkler | 301.934.8305 | |
| | Mary Pat Berry | 301.643.2986 | |
| CLASSIFICATION CHAIRMEN: | Abi Clements | 240.419.7582 | |
| | Design | Paula Winkler | 301.934.8305 |
| | DISMANTLING CHAIRMAN: | Paula Winkler | 301.934.8305 |
| ENTRIES/PLACEMENT CHAIRMEN: | Horticulture | Jane Hobbs | 301.751.1227 |
| | | Susan Montgomery | 240.254.2626 |
| | Design | Paula Winkler | 301.934.8305 |
| HOSPITALITY CHAIRMAN: | Carol Donahue | 301.643.8221 | |
| JUDGES CHAIRMAN: | Paula Winkler | 301.934.8305 | |



Above left, a tall, tiered "cake" decorated harvest style stands at the entry to the greens area at the Charles County Fairgrounds, announcing the 75th anniversary of the fair.



Photos by Gary Smith (above) and Gaymuth J. Schultz

At the 75th County Fair

Junior gardeners, assisted by the Charles County Garden Club, create flower arrangements to enter at the Charles County Fair. At right, Michael Burger looks up with a blueberry-smearred face. He won the Saturday afternoon pie-eating contest and a \$50 savings bond. For more on the fair, see A-3.



Mary Pat Berry and her granddaughter Leanne Berry demonstrated the techniques of traditional flower arrangement on Monday to members of the Charles County Garden Club.



Mary Lilly discusses tips and techniques of modern flower design to members of the Charles County Garden Club in preparation for next month's county fair.



The Charles County Garden Club of Maryland Inc., which is celebrating its 80th anniversary this year, has held its flower show at the Charles County Fair since the 1940s.

JUDGES CLERKS CHAIRMAN:
 JUDGES BRUNCH:
 PUBLICITY CHAIRMAN:
 TAGING CHAIRMAN:
 YOUNG GARDENERS CHAIRMAN:

| | |
|-----------------------|--------------|
| Angie Zajak | 240.270.6778 |
| Provided by committee | |
| Mary Lilly | 301.752.1980 |
| Paula Winkler | 301.934.8305 |
| Liz Hunsaker | 301.836.2921 |
| Andrea Turner | 240.427.7614 |

GENERAL RULES

1. This Flower Show conforms to the standards established by National Garden Clubs, Inc. (NGC). The Handbook for Flower Shows (HB 2017) edition, with revisions printed in The National Gardener magazine (TNG), is the authority for all issues not covered by the Schedule, which is the Law of the Show.
2. All classes are open to any gardener or designer. Each exhibitor is limited to one entry per class, except in the Horticulture Division. Each exhibitor needs a number issued by the Fair Board. If you have been assigned a number, that number does not expire. An Entry Form must accompany all entries. An Entry Form can be completed on-line or picked up at the Fairgrounds on the day entries are accepted. Entry cards must be completed for each entry and will be available at the Fairgrounds. Entry to the Fairgrounds to place an exhibit is free.
3. Entries in the Design Division and the Botanical Arts – Artistic Crafts Division must be entered Wednesday, September 11, 2024, between 2:00 and 8:00 p.m. Horticulture Division exhibits must be entered Wednesday, September 11, 2024, between 1:00 p.m. and 8:00 p.m. only. No horticultural exhibits will be accepted on Thursday, September 12, 2024.
4. Entries may not be removed before 6:00 p.m. and must be removed by 7:00 p.m. on Sunday, September 15, 2024, or on Monday, September 16, 2024 between the hours of 9:00 a.m. and 11:00 a.m.
5. Fresh plant material must be emphasized throughout the show and may not be treated in any manner. No artificial plant material is permitted in any exhibit in any division listed in this schedule.
6. All entries must be passed and entry cards initialed by appropriate Classification Chairmen before exhibitor leaves the show floor. The Classification Chairmen will check exhibits for conformity to the schedule before judging. Final determination for conformance is the responsibility of the judges.
7. Judging will begin at noon on Thursday, September 12, 2024. The General Chairmen and the Classification Chairmen for each division are available during judging for possible consultations. They, along with the judges and clerks, are the only personnel allowed on the floor during judging. The decisions of the judges are final. Awards may be withheld if not merited.
8. The Committee will strive to assure the safety of all items after arrival and placement, but is not responsible for any loss or damage to exhibits. Please mark properties inconspicuously with exhibitor's name and phone number.
9. Plants on the MD Department of Natural Resources list of Rare, Threatened or Endangered Plants at http://dnr.maryland.gov/wildlife/Documents/rte_Plant_List.pdf may not be exhibited in the Horticulture Division but may be used in Design Division Exhibits only if grown by the exhibitor or obtained in a legal manner and so noted on a 3" x 5" card placed with the exhibit. See list at http://www.mdinvasivesp.org/list_terrestrial_plants.html.

The National Garden Clubs, Inc., Standard System of Awards consists of only one Blue Ribbon (scoring 90 points or more), one Red Ribbon (scoring 85 points or more), one Yellow Ribbon (scoring 80 points or more) and one White Ribbon, (scoring 75 points or more) per class or subdivision.

Judges are required to sign and mark entry cards of non-blue ribbon winners scoring 90 points or above. All NGC Top Exhibitor Awards are described in the HB, p.42-53.

AWARDS HORTICULTURE

NGC TOP EXHIBITOR AWARDS:

AWARD OF HORTICULTURAL EXCELLENCE, a rosette of green, orange and blue ribbons (HB 2017, p. 40), is offered to the highest scoring blue-ribbon winner, correctly named and entered by one individual, in the entire Horticultural Division.
ARBOREAL AWARD, a rosette of green ribbons (HB 2017, pp. 40-41) is offered to

the highest scoring blue ribbon winner, correctly named and entered by one individual for cut trees and shrubs, no more than 30" in length, to include an apical tip, central leader and several nodes. Two awards offered.

Eligible: One award in Section H and one award in Section I.

AWARD OF MERIT, a rosette of orange ribbons (HB 2017, p. 41) is offered to the highest scoring blue ribbon winner, correctly named and entered by one individual in each designated section. Eight awards offered.

Eligible: One award, each in Sections A, B, C, D, E, F, G, and J.

GROWER'S CHOICE AWARD, a rosette of dark green ribbons (HB 2017, p. 41) is offered to the highest scoring blue ribbon winner, correctly named and entered by one individual in each designated section. Three awards offered. (Rosette of dark green ribbons). Eligible: Sections K and L.

OTHER AWARDS FOR HORTICULTURE:(Awarded by the Show Chairmen)

MRS. XAVIER W. GARNER, SR., BOWL -Will be awarded to the Charles County Garden Club member with the most blue ribbons in the Horticulture Division. In the event of a tie, red ribbons, then yellow ribbons, and then NGC Top Awards will be counted.

FRANCES L. WINKLER BOWL-Will be awarded to the Charles County Garden Club member for winning the Arboreal Award in Section I.

CCGC HORTICULTURAL EXCELLENCE AWARD - Awarded to the winner of the NGC Award of Horticultural Excellence.

DESIGN

NGC TOP EXHIBITOR AWARDS:

AWARD OF DESIGN EXCELLENCE - a rosette of gold ribbons (HB 2017, p. 42) is offered to the highest scoring blue ribbon winner, entered by one individual, in the entire Design Division.

PETITE AWARD - a rosette of blue and white ribbons (HB 2017, p. 43) is offered to the highest scoring blue ribbon winner, entered by one individual, in a section of petite designs in a show of otherwise full-sized designs.

Eligible: Section P.

TABLE ARTISTRY AWARD - a rosette of burgundy ribbons (HB 2017, p. 43) is offered to the highest scoring blue ribbon winner, entered by one individual, in a section of Functional and Exhibition tables.

Eligible: Section Q.

BOTANICAL ARTS

BOTANICAL ARTS ARTISTIC CRAFTS AWARD - a rosette of navy blue ribbons, (HB 2017, p. 44) is offered to the highest scoring blue ribbon winner entered by one individual, in section of Artistic Crafts.

Eligible: Section S

OTHER AWARDS FOR DESIGN:(Awarded by the Show Chairmen)

MRS. FRANK J. (MELISSA) BOLTON BOWL- Will be awarded to a Charles County Garden Club member that earns a Blue Ribbon in the Novice Design Class. Eligible Class:92

PRESIDENT'S AWARD - Will be awarded to a Charles County Garden Club member by the President of the Charles County Garden Club selected from the entries in the Design Division.

Eligible: Design Division

RITA BUTTERWORTH BOWL- Will be awarded to the Charles County Garden Club member with the most Blue Ribbons in the Design Division. In the event of a tie, red ribbons, then yellow ribbons, and then NGC Top Awards will be counted.

CCGC DESIGN EXCELLENCE AWARD - Awarded to the winner of the NGC Award of Design Excellence.

RITA BUTTERWORTH BOWL — Will be awarded to the Charles County Garden Club member with the most Blue Ribbons in the Design Division. In the event of a



tie, red ribbons, then yellow ribbons, and then NGC Top Awards will be counted.
CCGC DESIGN EXCELLENCE AWARD — Awarded to the winner of the NGC Award of Design Excellence.

SPECIAL EXHIBITS

NGC TOP EXHIBITOR AWARDS:

YOUTH AWARD — May be awarded to the highest scoring Blue Ribbon winner of 90 points or more, in a designated Section for Youth Exhibits. Three awards offered (Rosette of red, white and blue ribbons). (HB 2017, p. 44)

Eligible: Section R.

One award in each of the following age/grade divisions:

- Juniors (Pre-school to Age 7);
- Intermediates (Ages 8-12)
- Advanced (Ages 13-17).

FAIR BOARD PREMIUMS

Premiums are subject to change due to state funding.

DESIGN – ADULT DIVISION

| | |
|--------------|---------|
| First Award | \$10.00 |
| Second Award | \$8.00 |
| Third Award | \$5.00 |
| Fourth Award | \$3.00 |

DESIGN — JUNIOR AWARD

| | |
|--------------|--------|
| First Award | \$5.00 |
| Second Award | \$4.00 |
| Third Award | \$3.00 |
| Fourth Award | \$1.00 |

HORTICULTURE — ADULT

| | |
|--------------|--------|
| First Award | \$4.00 |
| Second Award | \$3.00 |
| Third Award | \$2.00 |
| Fourth Award | \$1.00 |

HORTICULTURE RULES

- Only well-groomed, disease and pest free specimens of exhibition quality will be accepted.
- The NGC Exhibit Policies for Horticulture are as follows (HB 2017, p. 55):
 - All exhibits must be fresh.
 - All exhibits must have been grown by the exhibitor.
 - Plant material must be in its natural state and may not be altered by the application of oil, commercial “shine” products, etc. that change the natural appearance. No wiring of specimens is permitted.
 - Only foliage and/or flowers naturally grown and still attached to the specimen are permitted.
 - All plant material must have been in the exhibitor’s possession for at least the appropriate number of days as follows: Houseplants — 90 days; Annuals — 90

days, but no minimum for early maturing seeds and/or transplants; Bulbs — 90 days; Perennials (Herbaceous) — 90 days; Arboreals (Woody Ornamentals) — 6 months.

- Rules for a single species cut or container-grown specimen are listed in *The Handbook for Flower Shows 2017* or its supplement *Horticulture Exhibiting and Judging*.
- All entries are to be labeled by currently scientific designation or binomial name (genus, specific epithet) and/or variety or patented/trademarked name. In order to receive an NGC Top Exhibitor Award, the entry must be so identified. Common name may also be given.
- Exhibitor may make as many as they wish as long as each entry is a different genus, species, variety, cultivar, form, size or color.
- All exhibitors must have an exhibitor number, must complete an entry card in full for every entry, and must complete a summary entry sheet listing the division, section, class and complete botanical name of all entries. Exhibitor numbers, entry cards and entry sheets are available from the Fair Office. Entry cards are to be filled out in advance, if possible, using pencil, waterproof ink or mailing labels. See HB 2017 p. 57 for a correctly filled-out entry card.
- If a plant is considered a flowering plant, it should be exhibited as a flowering specimen. Foliage plants may flower, but should be exhibited as a foliage plant if they are grown for their leaves.
- Specimens with a class designation in the schedule may not be entered in the “Any other” class.
- Plastic wrap or celery will be furnished by the Committee to be used as wedging material.
- The Horticulture Classification Chairmen and/or the General Show Chairmen are free to subdivide classes by color, for, size, cultivar, variety or other distinguishing characteristics.
- General horticulture references in order of priority: *NGC Handbook for Flower Shows 2017*, *Horticulture Exhibiting and Judging*, and *American Horticulture Society A-Z Encyclopedia of Garden Plants*.
- The Scales of Points for Horticulture are printed in the *HB 2017*, Chapter 14, p. 129.

DIVISION I — HORTICULTURE

Eligible for Award of Horticultural Excellence

Section A — FLOWERING ANNUALS or TENDER PERENNIALS —

Eligible for Award of Merit

CLASS

- Canna*, one cut spike
- Celosia* (Cockscomb) crested, 1 cut stalk – red or rose
- Celosia* (Cockscomb) plumed, 1 cut stalk — any color
- Cleome*, 1 cut bloom
- Dahlia*, large, 6” or more in diameter, 1 cut bloom — any color
- Dahlia*, medium, 3” to 6” in diameter, 1 cut bloom — any color
- Dahlia*, small, under 3” in diameter, 1 cut bloom — any color
- Helianthus* (Sunflower), 1 cut bloom
- Petunia*, 1 cut spray
- Salvia* annual, 3 cut stems
- Tagetes erecta* (Marigold), African type (large), 1 cut bloom or spray
- Tagetes erecta* (Marigold), French type (dwarf), 1 cut bloom or spray
- Zinnia*, under 2”, 2 cut blooms — any color
- Zinnia*, dahlia flowered, 2” and over, 1 cut bloom — any color
- Zinnia*, cactus flowered, 2” and over, 1 cut bloom — any color
- Any other annual or tender perennial in flower, 1 cut bloom

Section B — FOLIAGE ANNUALS

CLASS

- Plectranthus scutellarioides*, *syn. Coleus blumei*, 1 cut stem or spray
- Ipomoea batatas* (Sweet Potato Vine), 1 cut stem not to exceed 18” from tip to cut end, any color
- Senecio cinerari* (Dusty Miller), 1 cut stem
- Any other annual grown for foliage, 1 cut leaf or stem

Section C — FLOWERING PERENNIALS —

Eligible for Award of Merit

CLASS

21. *Aster*, 1 cut stem or spray
22. *Hardy Begonia*, 1 cut stem
23. *Coreopsis*, 1 cut stem
24. *Chrysanthemum*, 1 cut bloom or spray — any color
25. *Echinacea*, excluding Coneflower, 1 cut stem
26. *Lycoris radiata* (Spider Lily), 1 cut bloom
27. Perennial *Salvia*, 3 cut stems
28. *Sedum*, 1 cut stem
 - a. 'Autumn Joy'
 - b. Any other *Sedum*
29. *Leucanthemum* (Shasta Daisy), 1 cut stem
30. *Rudbeckia* (Black-Eyed Susan), 1 cut stem
31. Any other perennial in flower, except *Rosa*, 1 cut bloom or spray

Section D — FOLIAGE PERENNIALS

Eligible for Award of Merit

CLASS

32. *Hosta*, 1 cut leaf, extra large, over 8" measured horizontally across midsection of leaf.
33. *Hosta*, 1 cut leaf, large, 6" to 8" measured horizontally across midsection of leaf.
34. *Hosta*, 1 cut leaf, medium, from 3" up to 6" measured horizontally across midsection of leaf.
35. *Hosta*, 1 cut leaf, small, up to 3" across measured horizontally across midsection of leaf.
36. Fern, 1 cut frond
37. Vines, 1 cut stem not to exceed 18" from tip to cut end
38. Any other perennial grown for foliage, 1 cut leaf or stem

Section E — FOLIAGE BULBS —

Eligible for Award of Merit

CLASS

39. *Alocasia* (Elephant Ear) See *Horticulture Rule #5*
40. *Caladium*, 1 cut leaf, large, over 4" in length
41. *Caladium*, 1 cut leaf, small, under 4" in length
42. Any other foliage bulb

Section F — ORNAMENTAL GRASSES —

Not to exceed 30" in length from tip of specimen to end

CLASS

43. *Miscanthus sinensis* (Eulalia Grass), maximum height 30", inflorescence (blooms) and leaves, 3 stems
44. *Miscanthus zebrinus* (Zebra Grass), maximum height 30", inflorescence (blooms) and leaves, 3 stems
45. Any other *Miscanthus*, maximum height 30", inflorescence (blooms) and leaves, 3 stems
46. Any other tall grass not listed above, maximum height 30", inflorescence (blooms) and leaves, 3 stems
47. Any other small grass not listed above, maximum height 20", inflorescence (blooms) and leaves, 3 stems
48. *Pennisetum alopecuroides* (Fountain Grass), maximum height 30", inflorescence (blooms) and leaves, 3 stems
49. *Cortaderia selloana* (Pampas Grass), maximum height 30", inflorescence (blooms) and leaves, 3 stems

Section G — ROSA (Roses) —

Eligible for Award of Merit

CLASS

50. English type rose, 1 cut bloom or spray
51. Floribunda, 1 cut bloom or spray, naturally grown
52. Grandiflora, 1 cut spray, naturally grown
53. Hybrid Tea (properly dis-budded), 1 cut bloom
54. Miniature rose — 1 cut bloom or spray
55. Any other rose, 1 cut bloom or spray

Section H — SHRUBS



Eligible for Arboreal Award

One cut specimen branch must be at least 8" and must not exceed 30" in length from tip of specimen to cut end. Single cut branch to include apical tip and several nodes.

CLASS

56. *Aucuba*
57. *Hydrangea*
 - a. *Macrophylla* (Mop Head)
 - b. Any other *Hydrangea*
58. *Ilex* (Holly), berried
59. *Ilex* (Holly), non-berried
60. Needled Evergreen shrub
61. *Pyracantha*, berried
62. Any other flowering, fruited or berried broadleaf evergreen shrub
63. Any other deciduous shrub (excludes *Callicarpa* (Beautyberry))

Section I — TREES

Eligible for Arboreal Award

One cut specimen branch must be at least 8" and must not exceed 30" in length from tip of specimen to cut end. Single cut branch to include apical tip and several nodes.

CLASS

64. *Magnolia*
 - a. Evergreen
 - b. Deciduous
65. *Conifers*
 - a. Needled
 - b. Deciduous
66. *Ilex*
 - a. Berried
 - b. Non-berried
67. Any other tree

Section J — HERBS

Eligible for Award of Merit

One cut stem or spray unless otherwise noted, shown without bloom unless bloom has culinary value.

CLASS

68. *Artemisia*
69. *Lavandula* (Lavender)
70. *Ocimum* (Basil)
71. *Allium*
72. *Rosmarinus* (Rosemary)
73. *Salvia* (Sage)
74. *Thymus* (Thyme), 3 cut stems or sprays
75. Any other herb

Section K — CONTAINER GROWN FRUITED or FLOWERING PLANTS

Eligible for Grower's Choice Award

Container not to exceed 10" at inside diameter or widest point.**CLASS**

76. *Begonia*
 77. *Saint paulia* (African Violet), single crown only, unless trailer
 78. Any fruited container-grown plant (ie. ornamental pepper, cherry, etc.)
 79. Any other container-grown plant in flower

Section L — CONTAINER GROWN FOLIAGE PLANTS**Eligible for Grower's Choice Award****Container not to exceed 10" at inside diameter or widest point.****CLASS**

80. *Caladium*
 81. Cacti
 82. *Coleus*
 83. Fern
 84. *Helix* (Ivy)
 85. Succulents, except Cacti
 86. Vines
 87. Any other container-grown foliage plant

Section M — COMBINATION PLANTINGS**Eligible for Grower's Choice Award**

A grouping of three (3) or more botanically different plants with similar cultural requirements such as light, water and humidity. Naturalistic accessories permitted in all combination plantings but must be in scale with plantings and container, and theme appropriate to the plants.

[Note: Naturalistic accessories are rocks, pebbles, wood, etc., figurines, animals and other fairy garden-type accessories are not allowed. Unobtrusive supports are allowed for orchids and upright climbing plants. Containers in Classes 88 and 89 must be unadorned, clay, plastic, or ceramic. Class 90 must be weather resistant clay, stone, wood or 'hypertufa' type material. All plants must be individually labeled with a number. Numbers and corresponding botanical names to be written on a 3"x5" card placed with the exhibit.]

CLASS

88. Dish Garden – miniature landscape in an open low-volume shallow container. Container may be round, 10" across if square, and 10" x 14" if rectangular. [Note: a Miniature landscape incorporates plants with an emphasis on different sizes, forms, colors, and textures planted to represent a home, park, etc., type landscape. There may be open areas and paths with sand, moss, pebbles, etc.]
 89. Planter – a grouping of plants in an indoor or outdoor container. Container may be round, square, or rectangular, but may not exceed 10" in diameter if round, 10" across if square, or 10" x 14" if rectangular. [Note: Ideally, plants should be different colors, heights, and textures, grouped "comfortably snug" together with little surface soil exposed.]
 90. Troughs – a miniature naturalistic landscape planting in a container designed to withstand year-round conditions (Soil volume is greater than for dish gardens; container may dominate. Container may be round, square, or rectangular, but may not exceed 10" in diameter if round, 10" across if square, or 10" x 14" if rectangular. [Note: Plants in troughs should all be compatible for a particular climate, regional/geographic location, or soil type.]

DESIGN RULES

- The NGC Policies and Guidelines for Design are as follows (*HB 2017*, p. 79-80):
 - Some plant material must be used in every exhibit.
 - Exhibitor may enter multiple classes but may enter only one exhibit per class.
 - An exhibit entered for competition must be the work of only one exhibitor and that exhibitor's name must be on the entry card.
 - If the designer is unable to fulfill the assignment, it is the designer's responsibility to provide a substitute, and notify the Consultant immediately.
 - If unable to transport or set up a completed design, a substitute may enter the exhibit for the designer.
 - A single flower is not a design. Container-grown plants are permitted

where appropriate, but are never considered floral designs.

- Landscapes, scenes or anything representing an actual item of clothing, person, animal, etc., are not acceptable.
 - Religious symbols must be displayed respectfully.
 - All plant material used in design must be listed on a white, unlined card, no larger than 3"x5", placed with the exhibit. Botanical and/or common names are acceptable.
- All entries must be pre-registered by Thursday, September 5. To register, call the Consultant listed for the class you wish to enter.
 - Entries without a reservation will not be accepted.
 - Plant and non-plant material permitted and not permitted are printed in the *HB2017* p. 80-81. No artificial flowers, foliage, fruited or vegetables are allowed. Artificial is defined as imitation or manufactured to appear as real material. Fresh plant material may never be treated in any manner; dried plant material may be treated. Decorative and weathered wood are considered dried and are not allowed in classes requiring that all plant material be fresh.
 - Plant material need not be grown by the exhibitor and may be obtained from any legal source.
 - Exhibitor is required to conform to the stated description and limitations of the Design Type, if named in the class. Rules for Design Types are printed in the *HB 2017*, Chapter 7.
 - Exhibition tables provided by the Committee will be draped/skirted in black.
 - Designer is on her/his honor that the design being entered has not been previously entered or judged in a NGC Flower Show (*HB 2017* p. 37).
 - All staging panels and underlays are designer's choice.
 - Exhibitor must maintain the design in good condition for the length of the show or the Committee will remove the wilted material.
 - All reasonable care will be taken but the Committee is not responsible for loss or damage to exhibitor's property. All property should be marked inconspicuously with exhibitor's name.
 - The Scale of Points used is in the Handbook for Flower Shows Revised 2017, p. 130.

DIVISION II — DESIGN**Eligible for Award of Design Excellence
Eligible for the President's Award****Section N. Consultant: Mary Lilly — 301.752.1980****CLASS****91. SNOW CONES**

An Underwater design (*HB2017* p. 79) of all fresh, dried and/or treated plant material.
 Staged in a niche 36" high x 24" wide x 24" deep.
 4 Entries

Section O. Consultants: Angie Zajak, 240.270.6778**CLASS****92. BEES & HONEY**

A design using fresh, dried and/or treated plant material; designer has freedom in style. Open only to novices (person who has not won a blue ribbon in a Standard Flower Show).
 Staged in a niche 36" high x 24" wide x 24" deep.
 4 Entries

**Section P. Consultants: Mary Lilly 301.752.1980
or Paula Winkler 301.934.8305****CLASS****93. QUEEN NICOTINA**

A traditional design using fresh, dried and/or treated plant material; designer has freedom in style. Staged in a niche 36" high x 24" wide x 24" deep.
 4 Entries

Section Q. Consultant: Paula Winkler- 301.394.8305

Eligible for Petite Award**CLASS****94. TICKET TAKER**

A design of any style (HB2017 p. 73) using fresh, dried and/or treated plant material, not to exceed 5" in height, width or depth. Staged on an elevated stand supplied by Show Committee. Exhibitor has complete freedom to choose the components and plant material.

4 Entries

95. FUNNEL CAKES

A design of any style (HB2017 p. 73) using fresh, dried and/or treated plant material, not to exceed 8" in height, width, or depth. Staged on an elevated stand supplied by Show Committee. Exhibitor has complete freedom to choose the components and plant material.

4 Entries

96. SHEARED SHEEP

A design of any style (HB2017 p. 73) using fresh, dried and/or treated plant material, not to exceed 12" in height, width, or depth, organized in one container. Staged on an elevated stand supplied by Show Committee. Exhibitor has complete freedom to choose the components and plant material.

4 Entries

Section R. Consultant: Kate Zabriskie - 301-710-2063**Eligible for Table Artistry Award****97. FRESH SQUEEZED LEMONADE**

A Functional Table design (HB2017 p. 76) for two to include two place settings, fresh, dried and/or treated plant material. Flatware (may be made of plastic, wood or inexpensive metal) and an overlay are permitted. Each entry will be staged on a card table with a black underlay provided by show committee. Card table dimensions are 30" x 30".

4 Entries

98. ICE CREAM SUNDAE

Functional Table design (HB2017 p. 76) for one. Place setting may include fresh, dried and/or treated plant material. Flatware (may be made of plastic, wood or inexpensive metal) and an overlay are permitted. The decorative unit must be in proportion to the one (1) place setting. Will be staged on one-quarter of a 48" diameter black wrought iron table with each space separated by a black divider 20" in height. Table will be covered with a black underlay.

4 Entries

99. FAIR FOOD FAVORITES

An Exhibition Table (HB2017 p. 76). Plant material must be used as needed for the overall design. Fresh, dried and/or treated plant material may be used. The use of underlays and staging panels are permitted. Flatware permitted (may be made of plastic, wood or inexpensive metal). Design will be staged on a table in a space 24" x 24".

4 Entries

BOTANICAL ARTS - ARTISTIC CRAFTS RULES

- All entries must be pre-registered by Thursday, September 7th. To register, call the Consultant listed for the class you wish to enter. Entries without a reservation will not be accepted.
- All Botanical Arts - Artistic Crafts exhibits must contain some plant material. Exhibit must contain some fresh and/or dried plant material. Only dried material may be treated.
- Artistic Crafts are objects with a function.
- Complete coverage of the object is not required.
- No artificial, endangered or locally invasive plant material may be used.
- The Scale of Points for judging Botanical Arts Horticulture, Design, Artistic Crafts and Photography are listed in Chapter 14 of the Handbook for Flower Shows.
- The rules for Botanical Artistic Crafts are printed in the Handbook for Flower Shows, Chapter 10. Plant material need not be grown by the exhibitor and may be obtained from any legal source.
- Exhibitor is required to conform to the stated description and limitations of the Artistic Crafts.
- Exhibitor must maintain the design in good condition for the length of the show or the Committee will remove the wilted material.

- All reasonable care will be taken but the Committee is not responsible for loss or damage to exhibitor's property. All property should be marked inconspicuously with exhibitor's name.

DIVISION III — BOTANICAL ARTS—ARTISTIC CRAFTS

Section S. Consultant: Joan Mitchell - 301.643.2729

CLASS**100. FRAME A FAVORITE MEMORY**

Embellish an 8"x10" frame with flowers/plant material of crafters choice that would be just perfect to place a photo of a perfect day at the fair. It can display an actual 'fair day' photo or showcase a decorative or plain paper. Frames can be placed vertically or horizontally and will be provided by Show Committee. Frames available Wednesday, August 21, 2024. Frame to be displayed full view - not angled. Design space is 12" square.

4 Entries

101. PONCHO PAST OR PRESENT

Embellishment of a poncho that would be worn as the night begins to chill. Poncho will viewed only from the front. The ponchos will be draped over a black dress form supplied by Show Committee and will be available Wednesday, August 21, 2024.

4 Entries

102. ANNIVERSARY CAKE

Bake the perfect cake to celebrate the Fair's 100th Anniversary using designers choice of plant material and components. The cake will be viewed from the front only and is to be displayed on a clear, plastic pedestal-cake stand to be supplied by the Show Committee. The cake should contain three (3) layers with the total height no taller than 24".

Design space is 24" square.

Pedestal-cake stand is 13 1/2" x 2 3/4"

4 Entries

DIVISION IV — SPECIAL EXHIBITS**YOUTH RULES**

- This division is open to Young Gardeners, Juniors (Pre-school to Age 7), Intermediates (Age 8-12), and Advanced (Age 13-17) who attend the Young Gardener's Workshop at the Charles County Fairgrounds on Wednesday, September 16, 2020 at 5:00pm. All designs must be made at the workshop. For further information and reservations, please contact: Liz Hunsaker (301.836.2921) or Andrea Turner (240.427.7614)
- Exhibitor is allowed only one entry and may enter only one class.
- Some plant material will be available at the Wednesday Workshop.
- Rules for Designs:
 - Each exhibit must be the work of the individual exhibitor
 - No artificial plant material permitted. Fresh plant material encouraged.
 - Landscapes or scenes are not permitted.
 - American or other National flags are not permitted.
 - Accessories permitted.
 - Other flower show policies in the Handbook for Flower Shows Revised 2017 apply.
- The Scale of Points used is in the Handbook for Flower Shows Revised 2017, page 130.

T. YOUTH EXHIBITS**Eligible for Youth Awards****CLASS****103. PONY RIDE**

An imaginative design using fresh and/or dried plant material. Staged on a table.

Space allowed is 12" square.

a. Juniors b. Intermediates c. Advanced

104. RABBITS AND CHICKS

A design using designers choice of plant material and components. Some plant material will be available at the Wednesday Workshop. Fresh and/or dried plant material allowed. Staged on a table.

Space allowed is 12" square.

a. Juniors b. Intermediates c. Advanced